

We have both organic and non-organic trace minerals and we have a variety of bio-activators. With that in mind, we are holding a technology and dealer combined training in August (see below). We hope you will consider attending regardless of your thoughts about a dealership.

SALE ON GW AG PRODUCTS: Greg Willis has announced a **50% off sale on his Ag Line in volumes of 1 gal and larger until Aug 15**. His technology can be found in his [Wholistic™ Agriculture Filed Broadcaster Handbook](#) . Here is a Q & A response to a blueberry grower in MI giving additional insight into his approach (see pictures on last page):

Greg,

I used the ultra field basic spray on some red table grapes and the flavor developed a sharpness like I've never tasted. I hope it works as well on my blueberries. We are almost done spraying the fields – is there anything else you would suggest spraying after the ultra field sprays? Should I be planning on more than one summer/fall field spray? After all, I'm not interested in having an average field!

Thanks, JR

JR,

No more sprays right now. Plan for another Ultra spray at the fall equinox, Sept. 21. Very important you do that to balance your field.

Just keep watch. The sprays are timed to Nature and your plant growth. If you see any signs at all of fungus, use the Fungus Interruptus™ spray. If the berries don't ripen the way you want them to, remember you can use the fruit ripening formula to bring them around.

After harvest, to improve flavors even more, you can use the Flavor Activators, 1 & 2, 3 & 4 and/or 5 & 6 to get the exact flavors you want. You just need some 2 oz. bottles since one press of spray will do an entire 2 by 2 by 4 bin. Pick the one you like. It will extend the shelf life.

If you're looking for more zip and intensity in your flavors, you can also add the Basalt Formula spray. One shot per bin. CSI can order what you need.

I see that your fields have a problem with clay not medicating the way it's supposed to do. The Ultra Basic will go a long way toward fixing that. So, I want you to consider making some compost with 1 1/2 handfuls of Bentonite clay per cubic yard of your compost when you make it. It must be Bentonite clay. The kind used to parge basements. It swells up to 8 times its size. I see your silica forces are out of balance. Too strong. The above compost and the sprays will balance it.

After harvest, I suggest using the Basilica spray and the Root Basilica spray to strengthen your root systems and bushes. Before the plants go into dormancy, I recommend an Oak Bark spray as a prelude to next year which will make your berries bigger and juicier and balance the strong silica forces that make the skins on the berries brittle and cut down on the juiciness. Apply the Root Ripening Formula 3 weeks before the first freeze date and the Dormancy Formula right after the first freeze. This will collect the energy from the plants in the soil and roots, preparing the plant for next year.

These are inexpensive sprays so don't worry about the cost.

Apply the Winter-Spring Ultra Basic right around Christmas and again around March 20 and you should be fine with the balancing. I recommend the Flowering Formula in April

to increase the blooms and fruit set correctly, then Fungus Interruptus™ after bloom in the Spring. – Greg.

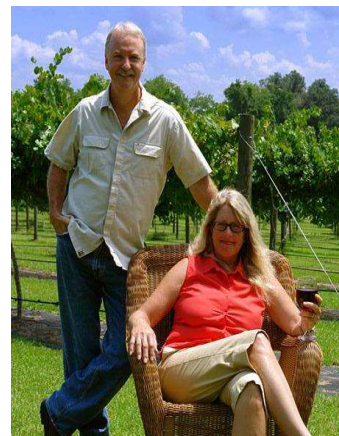
CSI's THREE DAY NON-TOXIC FARMING SEMINAR: Is scheduled for Mon – Wed, August 24 – 26. This seminar gives you a chance to learn CSI's technology and approach to working with crops/soils and includes the history and science of agriculture, understanding a plant, how fertilizers work and how to use them to manipulate plants, the role of microbes in the soil, the role of weeds and insects, understanding soil testing and soil balancing, and much, much more. Cost: \$400 prepaid with check by Aug. 15th (\$450 at the door). Several of our experienced dealers/soil consultants will also be attending giving you a chance to pick their brains.

The seminar will be held at the Best Western Hospitality Hotel located at 5500 28th St SE, Grand Rapids, MI 49512. Ph: 616-949-8400. Cost of the room is about \$75 per night including tax and is located within a short walking distance to three restaurants. Hotel serves scrambled eggs, sausage, waffles, cold cereal, Danish, etc as a free breakfast, and has a refrigerator and microwave in most rooms. **Note: Best if you have read *The Nontoxic Farming Handbook* published by Acres USA and written by our own Dr. Phil Wheeler and Ron Ward – available from CSI.**

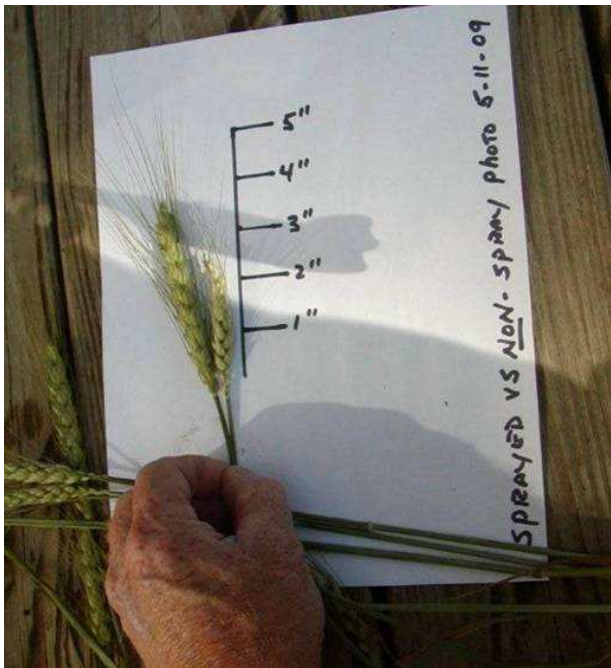
Blooming Blossoms Nitrogen Fixing Microbial Products

Blooming Blossoms: Right – Mike Kantz of Stonewell Vineyard: 2007 = 45% grape increase from 2006

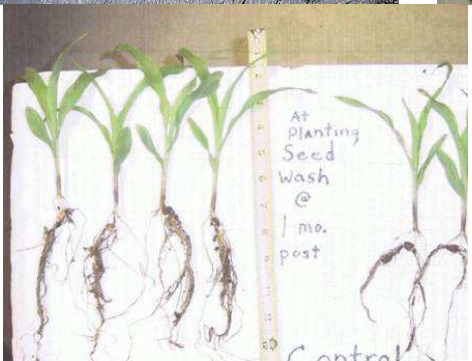
Bioplin & NutraTech: Below – Control vs Treated showing root growth response



"... we (started using) *Bioplin* and *NutriTech* products beginning in 2005. Our vines improved and flourished, and yields of the highest quality organic grapes continue to increase. Last year's crop of 2007 enjoyed a 45% increase of grapes over the previous '06 growing season, after using less than suggested dosage amounts of *Bioplin* and *NutriTech* to the soil. "Mike Kantz, StoneWell Vineyard, Ocala, FL (see p. 2)



Green Yields: Plant Based Surfactant Impacting Roots, Brix, Yields
Call: CSI 800-260-7933



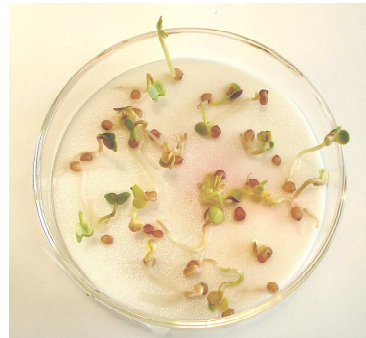
Top & clockwise: Sprayed vs nonsprayed Barley, 5/11/09; 2008 Soybean - many farmers had to sharpen and replace cutters, 4 bean pods were easy to find; Barley root mass sprayed 3/6/09, photo 5/11/09; Barley treated heads with control, Corn root response, Barley plant response, Corn root response, Okra root response.

Log onto www.greenyieldsIL.com and look over videos.

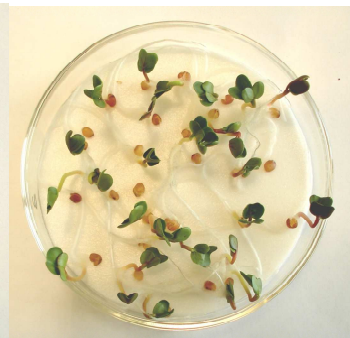


Top: Conventional potato field in Arvin, CA. Program: 600 #'s 12-12-12, 50 gal 10-34-0 and 1000# **KS Plus**

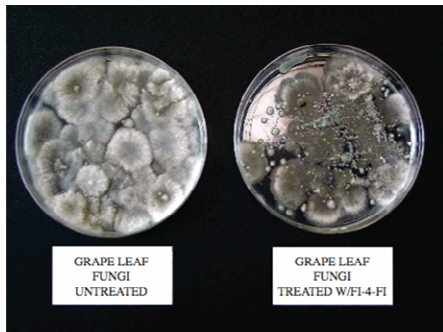
Bottom: Organic Arvin, CA potato field treated with manure composted with **KS Plus**. Notice growth advantage. Tissue tests showed a 25 – 40% increase in phosphorous, 30 – 40% increase in potassium, zinc doubled and copper jumped 10 times.



Radish Seeds - 3 Days
Untreated



Radish Seeds - 3 Days
TF - FI - Combo - FI



WHOLISTIC™ Agriculture Field Sprays By GW Agriculture

www.theccdsolution.com (more pdf's &
Wholistic™ Broadcasting Tower Handbook

Wholistic™ Agriculture Science Since 1993™

Experience has shown that FD has other uses as well. Application of the FD formula later in the season will delay ripening by 3 to 5 days. This can be helpful in very hot weather where flavors do not develop at the same pace as sugars which develop faster in hot weather.



Rossi Ranch went from this to this, in two days in May

The drying power of FD, in combination with SSFI, provides a powerful one-two punch to control mold in crops and houses by first drying everything out with the FD Formula, then preventing the growth of the unwanted fungus, mold or mildew with SSFI.

Top Left: Dandelion Sprayed Apple Trees (left). Note reduced leaf/flowering and NO Frost Damage. Top Right: Radish Seeds sprayed with Transplant Formula & Fungus Interruptus. Middle: Cabernet Sauvignon winegrape leaves sprayed with Fungus Interruptus. Bottom: Field Drying Formula sprayed on very-wet Rossi Ranch and two days later.